

Sophos PureMessage for Microsoft Exchange

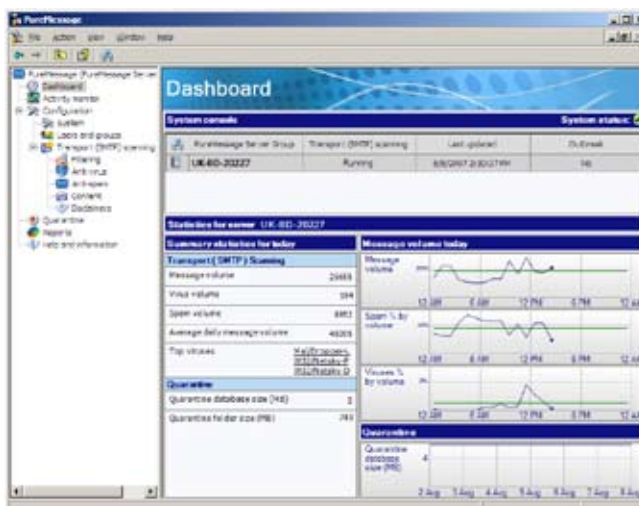
Sophos PureMessage™ for Microsoft® Exchange delivers integrated email gateway and Exchange mail store protection against email borne threats such as spam, phishing, viruses and spyware. In addition, organizations are able to control information sent and received both internally and externally protecting against the loss of confidential information or inappropriate use of the email system.

Comprehensive multi-threat protection

- Genotype® virus detection technology proactively blocks families of viruses even before specific virus signatures are available.
- A range of technologies, including Dynamic Code Analysis, pattern matching, emulation and heuristics, automatically check for malicious code.
- Genotype spam detection technology proactively blocks families of spam campaigns detecting up to 98% of spam and the intuitive end-user interface and spam digests allow end users to review quarantine contents.
- The comprehensive multi-language spam engine is constantly updated with new spam rules by SophosLabs.

Central management from a single console

- PureMessage provides an intuitive management console, enabling you to manage single or multiple Exchange server deployments from one location.
- You can quickly view the real-time status of your servers, email throughput and quarantine areas, via the email security dashboard and activity monitor.
- A cluster-aware service within PureMessage provides support for Active/Passive Exchange clusters.



Key benefits

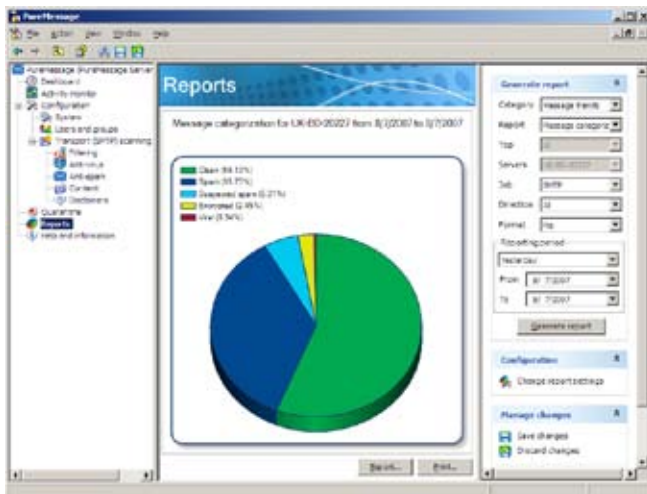
- » Detects, disinfects, deletes or quarantines viruses, spyware, Trojans and worms
- » Blocks up to 98% of spam and protects against email scams, including phishing attacks
- » Employs Genotype® technology to catch evolving spam campaigns and new virus variants
- » Provides consistent and automatic email policy enforcement
- » Prevents confidential and sensitive information being emailed out of the organization
- » Controls attachment types contained within inbound, outbound and internal email
- » Uniquely identifies archives, executables, music and video formats, using True File Type detection
- » Integrates seamlessly with Microsoft Exchange without compromising performance or integrity
- » Manages multiple Exchange or IIS servers and email policy from one console
- » Enables the use of Active Directory users and groups within email policy
- » Provides an insight into email traffic profile and threat protection through a real-time dashboard
- » Provides an end-user spam quarantine for quick retrieval of legitimate messages
- » Updates automatically with the latest protection from SophosLabs™
- » Includes 24x7x365 support for the duration of the license and Sophos can be contacted for one-to-one assistance at any time

Corporate policy enforcement

- The PureMessage policy engine allows corporate email policies to be configured for a specific email direction – inbound, outbound and internal.
- Integration with Microsoft Active Directory enables email policy rules to be set up for specific users and groups.
- Ready-to-use policies can block all file types known to carry potential threats or monitor emails containing offensive language.
- Policies can also be defined to search for phrases or regular expressions within emails and attachments, including all common office file formats.
- Consistent email policy enforcement prevents confidential or sensitive information from being accidentally or maliciously emailed outside or within your organization.

Comprehensive reporting and analysis

- A graphical report tool lets you create configurable management reports, highlighting trends and any areas of concern.
- Reports data can be easily exported for further analysis or inclusion into wider management reports..



Industry-leading expertise 24/7

- Our 24/7 support is highly acclaimed, while SophosLabs, our global network of threat analysis centers, provides a rapid response to emerging and evolving threats.

To evaluate PureMessage for Microsoft Exchange, visit www.sophos.com/products

ds/070824

Platforms supported

Console

Operating systems

- » Windows® 2000
- » Windows 2003 (32 bit/64 bit)
- » Windows XP Professional (32-/64-bit)
- » Windows Small Business Server 2000
- » Windows Small Business Server 2003
- » Windows Vista (32-/64-bit)

Memory

- » 256 MB minimum, 512 MB recommended

Disk space

- » 150 MB

Services

Operating systems

- » Windows 2000
- » Windows 2003 (32 bit/64 bit)
- » Windows Small Business Server 2000
- » Windows Small Business Server 2003

Microsoft Exchange versions

- » Exchange 2000
- » Exchange 2003
- » Exchange 2007

Memory

- Exchange 2000/2003
 - » Minimum 1 GB
 - » Recommended 2 GB

Exchange 2007

- » Minimum 2 GB
- » Recommended 4 GB

Disk space

- » Up to 2 GB

Languages available

- » English

Sophos is a world leader in IT security and control. We offer complete protection and control to business, education and government organizations – defending against known and unknown malware, spyware, intrusions, unwanted applications, spam, and policy abuse, and providing comprehensive network access control (NAC). Our reliably engineered, easy-to-operate products protect over 100 million users in more than 150 countries. With over 20 years' experience and a global network of threat analysis centers, the company responds rapidly to emerging threats and achieves the highest levels of customer satisfaction in the industry. Sophos is a global company with headquarters in Boston, MA., and Oxford, UK.